

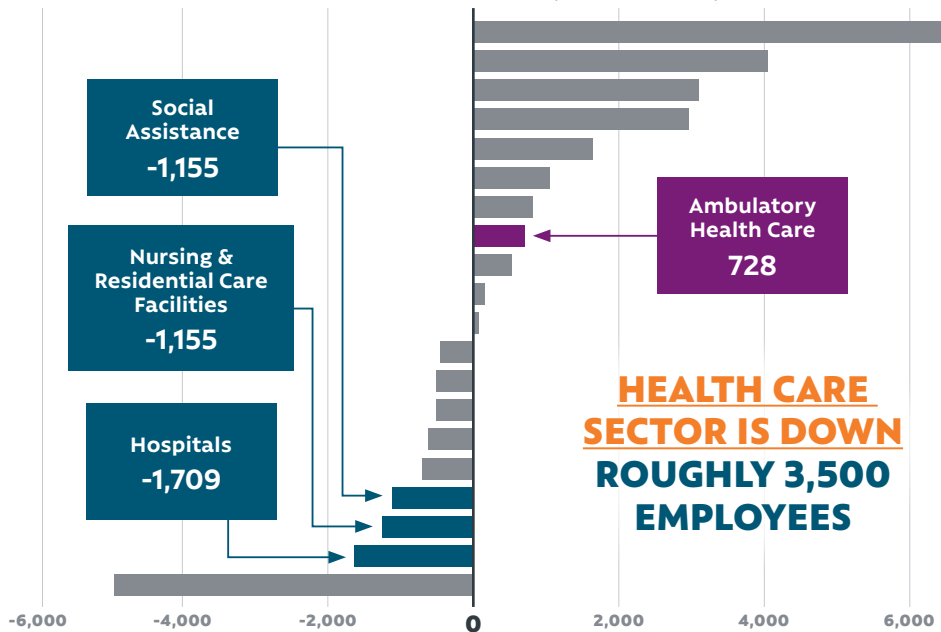
New Hampshire's Post-COVID Healthcare Workforce Chasm

Since the beginning of COVID, private sector employment has not only recovered, but grown by 1.1%. Healthcare sectors have not fared the same. In fact, the healthcare field has almost 3,500 fewer employees than at the beginning of COVID. This retraction in the workforce is only exacerbated by the fact that the demand for healthcare workers is 79% higher than 2019.

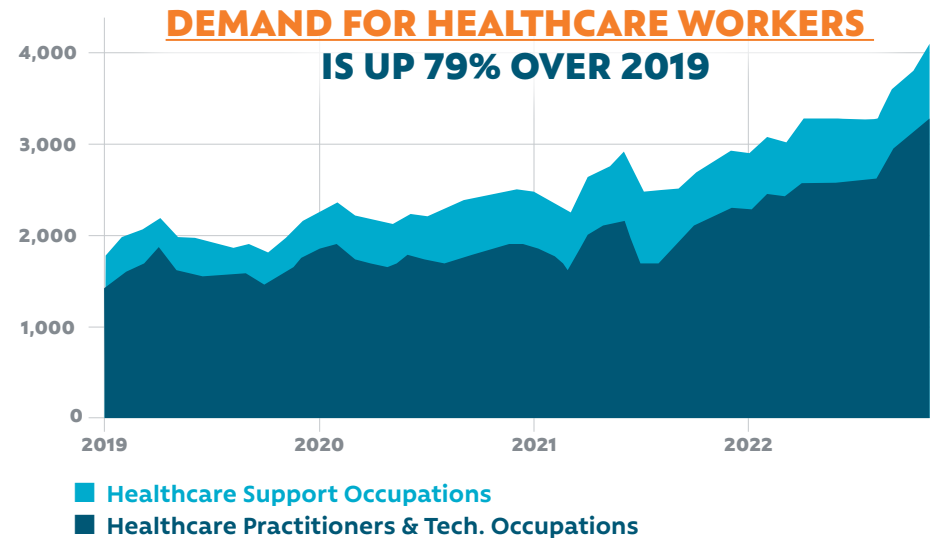


NH'S PRIVATE SECTOR EMPLOYMENT IS UP 1.1% OVER 2019

NH Industry Employment Q1 2020 to Q2 2022



Unique Healthcare Job Postings in NH*



*Three month moving average